



Severe Incident Response Vehicle (SIRV) Arterial Response Program

Florida Department of Transportation District Four

SIRV Program Details

SIRV began in 2005 to assist in clearing the roadways from major events on the interstates in District Four.

Areas of coverage in District Four:

- Broward County – I-95, I-75, and I-595
- Palm Beach County – I-95
- Martin, St. Lucie, and Indian River Counties – I-95 (on-call)

SIRV responds 24 hours a day, seven days a week to severe traffic incidents such as a full highway closures, fatalities, overturned commercial vehicles, and any other lane-blocking events likely to last two hours or longer.

Arterial Operations

In July 2019, FDOT implemented arterial response in Broward County to provide a coordinated response to clearing incidents along the arterial system.

SIRV provides extra maintenance of traffic (MOT) devices, spill mitigation supplies as well as roadway repair supplies and equipment.

Coordination between SIRV, the Traffic Management Center (TMC), and on scene responders is crucial for this operation.

Response Criteria

Lane blocking events that:

- involve fuel or oil spills of 25 gallons or more
- are of sufficient scale to require the deployment of more MOT than the responding agencies have readily available
- require minor repair to the asphalt surface of the travel lanes
- are expected to last 30 minutes or more
- involve fuel, oil or other hazardous materials being introduced into the waterways
- Any other event that a FDOT, TMC or SIRV supervisor determines a SIRV response is warranted.

SIRV Operator Qualifications

SIRV Operators are retired Law Enforcement Officers or Fire Rescue workers and are carefully selected based on their training, skills, and experience.

In addition to the training the Operators had prior to joining the SIRV Team, they receive training in:

Requirements

- Incident Command Procedures
- National Incident Management System (NIMS)
- Advanced Maintenance of Traffic (MOT)
- Incident Quick Clearance Procedures
- Emergency Vehicle Operation
- CPR & First Aid
- HAZMAT Awareness



SIRV Vehicle Specialized Equipment

Roof Mounted Arrow Board for Maintenance of Traffic (MOT)

Spill mitigation equipment to include Spill Pads, Containment Pools and over 700lbs of clay absorbent.

Over 250 Standard Flares and 12 Electronic Flares

Roadway Repair Supplies

Emergency Warning Signs

High Intensity Lighting

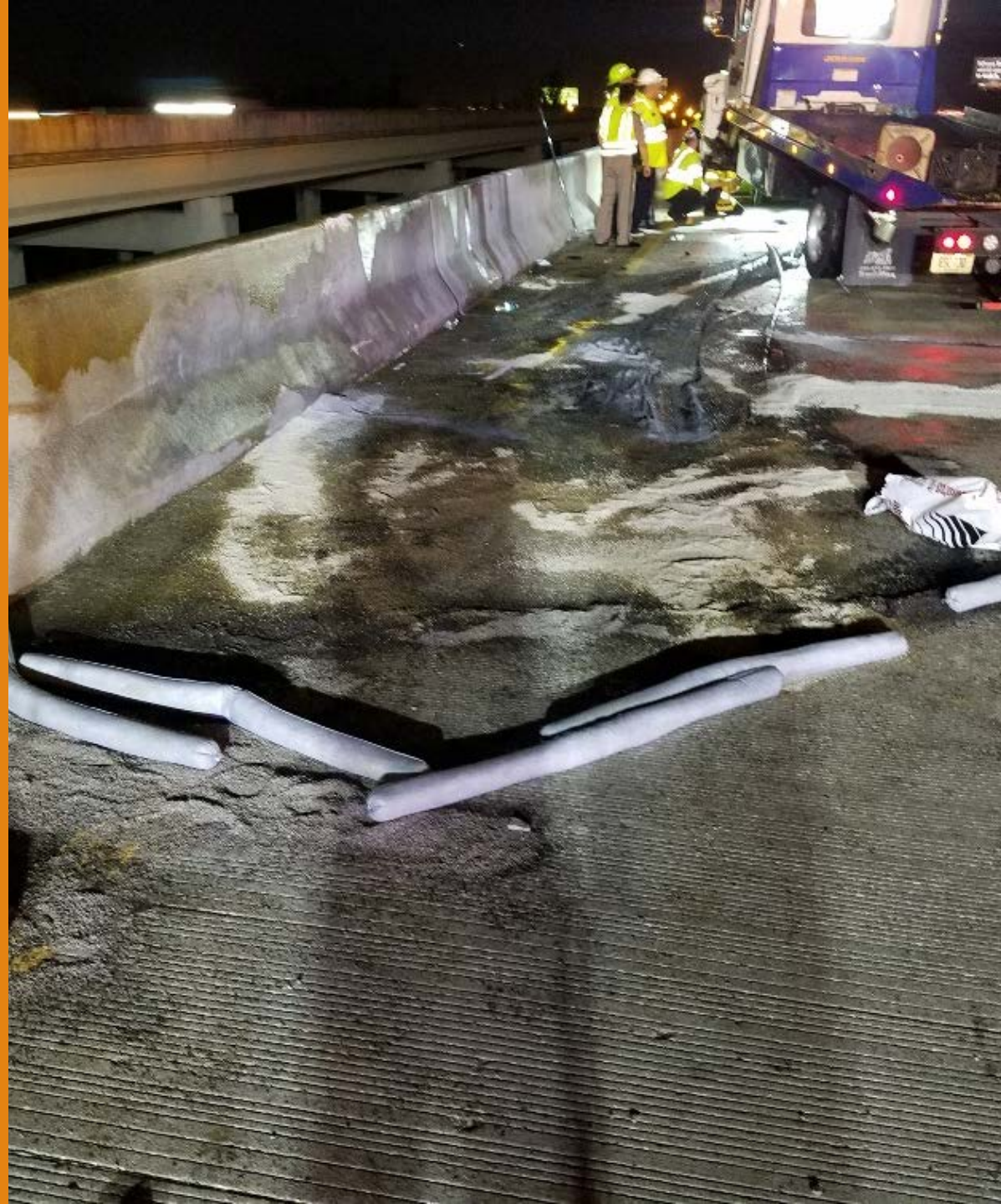
Brooms and Shovels

100 Traffic Cones



SIRV Vehicle Specialized Equipment

SIRV Vehicle
Specialized
Equipment -
Spill Mitigation



On Scene Responsibilities

Block lane of traffic using SIRV vehicle.

Set up Maintenance of Traffic (MOT)

Establish and maintain a safe work zone.

Coordinate the removal of damaged/disabled vehicles from the travel lanes.



SIRV Interaction: On Scene

Florida Highway Patrol and local
police agencies

Local Fire and EMS

Road Rangers

Tow Companies

Department of Environmental
Conservation

Highway Maintenance

General Public



Traffic Management: Special Events

- COVID-19 Testing Sites
- Feeding South FL Food Drives
- Presidential Motorcades
- Sporting Events

